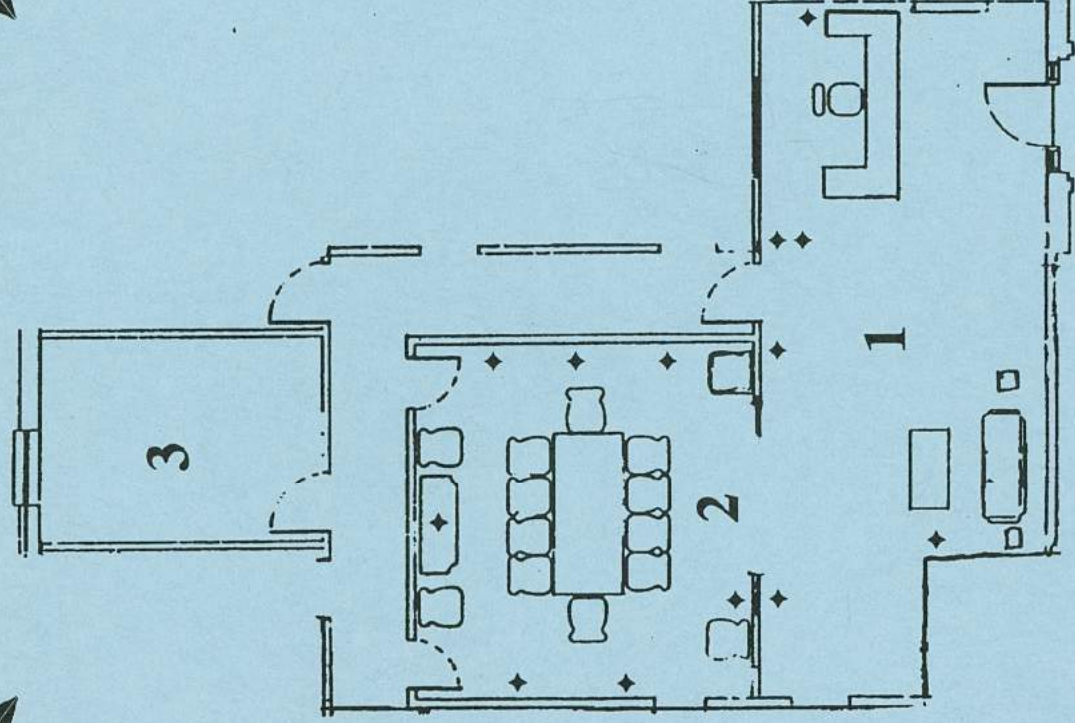


Charles E. Choate Exhibit

GUIDE CARD



◆ Location of Sterling Everett original paintings
of Washington County Choate Structures

1. Reception Area

2. Conference Room

3. Resource Room

Resources interpreted on back

Charles E. Choate Exhibit

Research Room Components

- ◆ Video highlighting life and works of Architect Choate (10 minutes)
- ◆ Research Guide Series
 - Photo Collections depicting Choate's designs (interiors & exteriors) in GA, FL, NC, SC, & AL
 - Personal Photo Scrapbook kept by Choate
 - 1903 Promotional Pamphlet featuring his early designs
 - Family Photos
 - National Register Nomination
- ◆ Map of Southeastern US illustrating cities & towns where Choate structures were built, and locations of his offices
- ◆ Collected letters and European trip artifacts loaned by family
- ◆ Photo collages of Choate's designs by themes:
 - Homes
 - Churches
 - Carnegie Libraries
 - Interiors

Charles Edward Choate, whose designs and structures enrich the Southeastern United States, was born in 1865 in Houston County. He had dual careers in the 1890's -- architecture and Methodist ministry. By 1900, living in Washington County, architecture became his focus. He relocated to Augusta in that year. By 1909, he settled in Atlanta, opening a firm in the Candler Building. His commissions continued to be widespread.

He moved to Florida in 1926. He practiced in Tampa and Orlando and worked as a state supervisor of hotels. In 1929, situated in Montgomery, Alabama, sickness drew him to his wife's hometown, Maysville, Kentucky, where he died November 26, 1929.